



Omega Pacific

CSE: **OMGA** | OTCQB: **OMGPF** |
FSE: **Q0F**

Overlooked Gold Discovery in BC's Toodoggone

Corporate Presentation

MIF May 2026



Cautionary Statement

Certain statements contained in this presentation constitute forward-looking statements. These statements relate to future events or the Corporation's future performance, business prospects or opportunities. All statements other than statements of historical fact may be forward-looking statements. Forward-looking statements are often, but not always, identified by the use words such as "seek", "anticipate", "plan", "continue", "estimate", "expect", "may", "will", "project", "predict", "potential", "targeting", "intend", "could", "might", "should", "believe" and similar expressions. These statements involve known and unknown risks, uncertainties and other factors that may cause actual results or events to differ materially from those anticipated in such forward-looking statements. The Corporation believes that the expectations reflected in those forward-looking statements are reasonable, but no assurance can be given that these expectations will prove to be correct and such forward-looking statements should not be unduly relied upon.

These statements speak only as of the date specified. The Corporation does not intend, and does not assume any obligation, to update these forward-looking statements. These forward-looking statements involve risks and uncertainties relating to, among other things, results of exploration activities, the Corporation's limited experience with development-stage mining operations, uninsured risks, regulatory changes, defects in title, availability of materials and equipment, timeliness of government approvals, changes in commodity and, particularly, gold prices, actual performance of facilities, equipment and processes relative to specifications and expectations and anticipated environmental impacts on operations. Actual results may differ materially from those expressed or implied by such forward-looking statements.

Qualified Person

The technical information with the Company's website and presentations have been reviewed and approved by Rob L'Heureux P.Geol., a Director of Omega Pacific, a Qualified Person as defined by NI 43-101 standards, responsible for the scientific and technical information contained herein.

Right Team, Right Place, Right Time



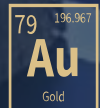
Team with Proven Track Record

Technically driven team, \$1B+ raised, 10M+ ounces of gold discovered across three continents.



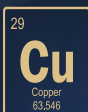
Toadogone District Expertise

A record of exploration success and expertise in the district. Our directors were instrumental in founding and advancement of Thesis Gold's Lawyers-Ranch Project (2.27 Moz Au Indicated & 5.45 Moz Au Inferred).



Quality Asset

Bulk tonnage gold discovery high grade zones. **Multimillion ounce potential** and additional Au-Cu opportunities. Cost effective exploration strategy.



Capital Structure

Attractive share structure and significant management ownership.

Leadership



Jason Leikam

CEO, Director

25 years experience in marketing, including serving as officer, director and founder of several junior exploration & development and cleantech companies.



Mark Minckler

CFO, Director

30 years of experience in accounting and finance, initially working in public practice for 10 years before moving to the private sector as a partner in a property development company.



John Williamson

Director (P.Geol.)

Founder & Principal of the Metals Group. Over 35 years experience operating global exploration and mining companies. Recognized several times for excellence by being named to the TSX Venture50. Founder of Benchmark Metals/Thesis Gold.



Rob L'Heureux

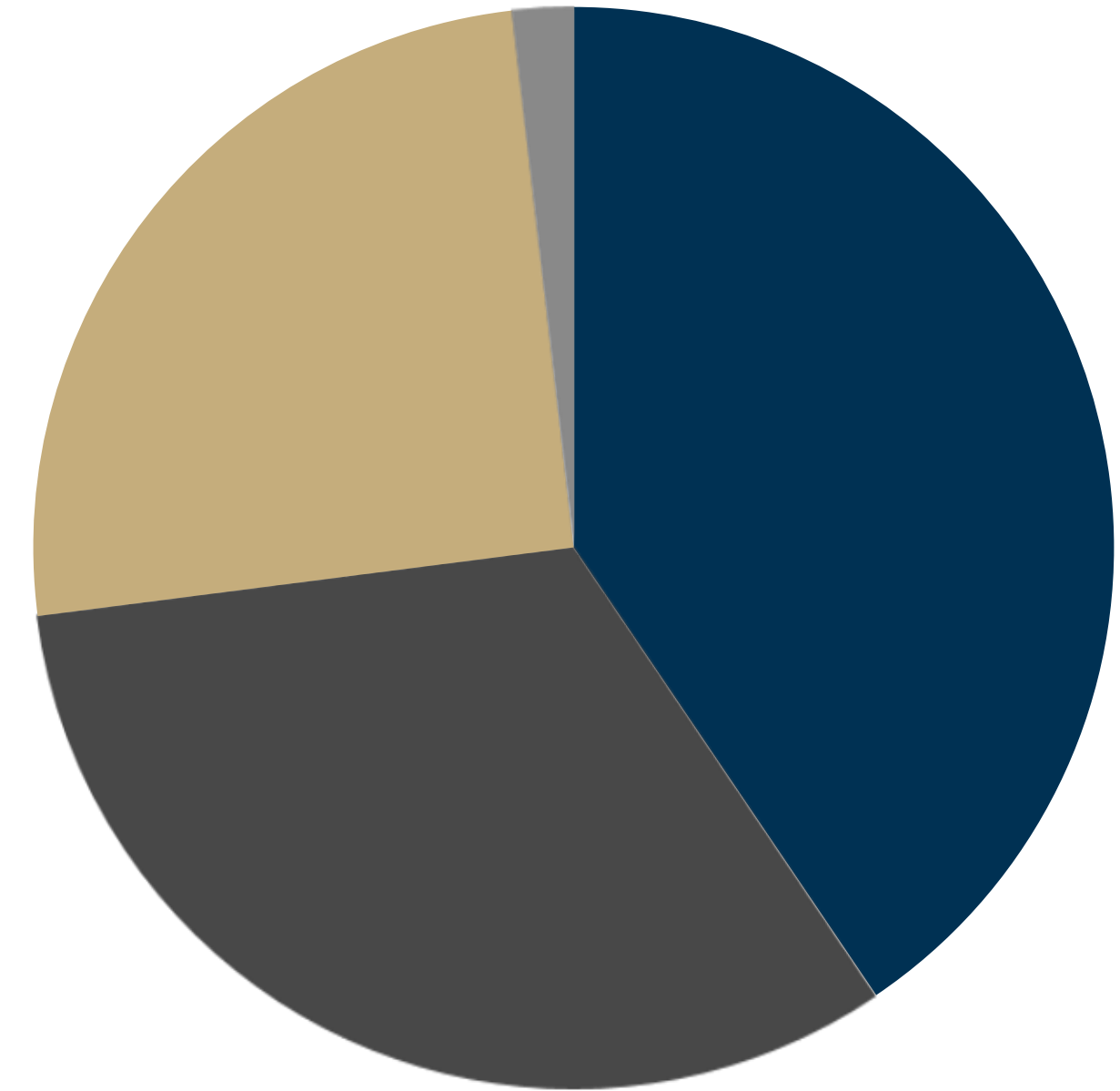
Director (M.Sc., P.Geol.)

25 years of global mineral exploration experience, managing exploration projects from grassroots to resource definition of several multimillion ounce gold deposits, including the Lawyers-Ranch project in the Toadoggone.

Capital Structure

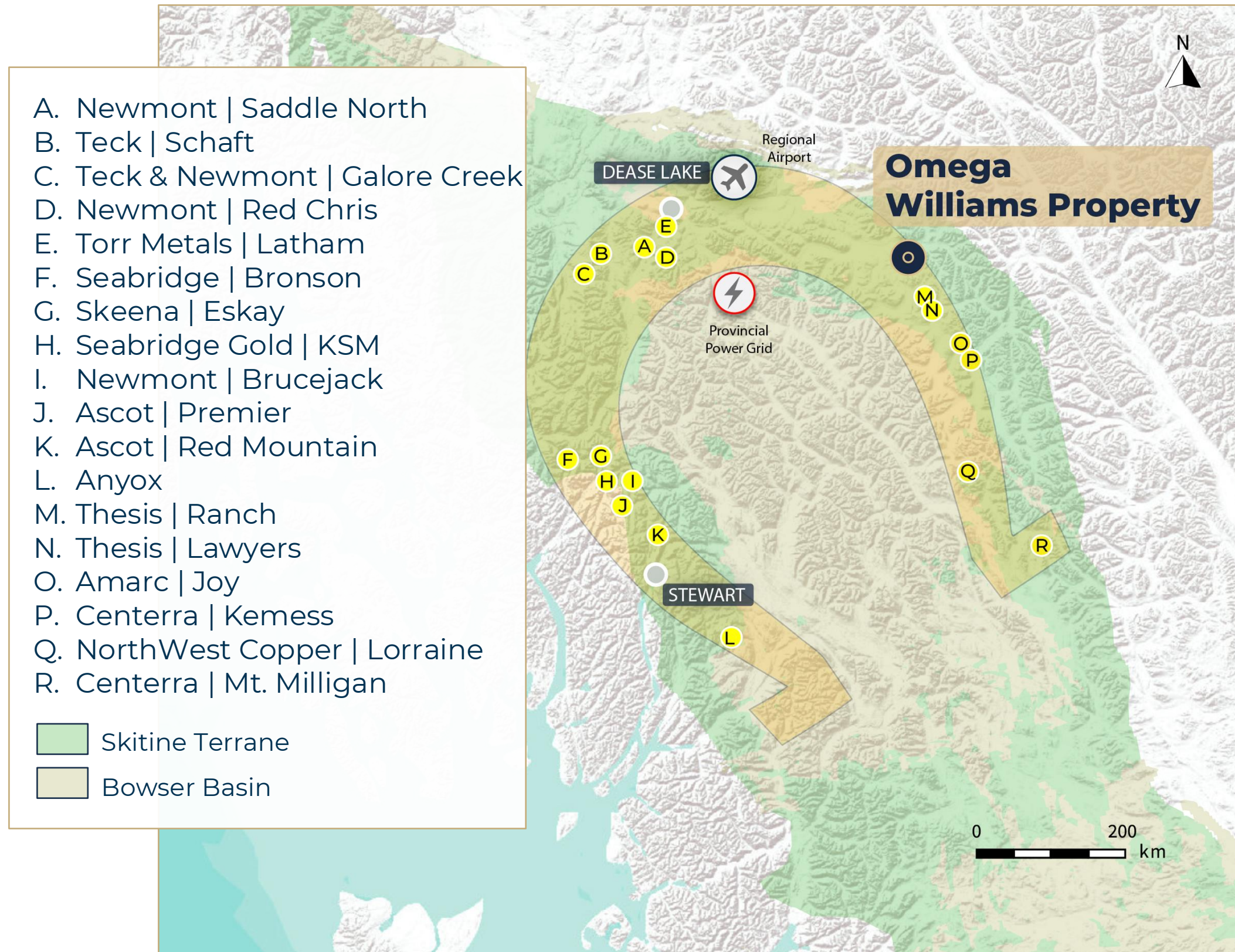


Shares	49,587,883
Warrants	10,570,788
Options	3,195,000
Fully Diluted	63,353,671
MCAP	\$8.4M



35% **30%** **30%** **5%**
Management **Retail** **Affiliates** **Funds**

BC's Golden Horseshoe



“One of the most attractive jurisdictions in the world” – Head External Relations, Newmont North America (CBC Nov 6, 2025)

Geology

- A major trend for epithermal and porphyry deposits
- The Stikine Terrane spans the Golden Triangle and the Toodoggone District, *resembling a horseshoe shape*

Attractiveness

- **Increasing investment** across the Golden Horseshoe
- **Driving discovery** and project advancement
- **Tier One jurisdiction** with multilateral support for resource development.

The Toodoggone



Proven Prospectivity

- ~10M oz Au discovered over last 8 years
- Major trend for epithermal and porphyry deposits

Discovery

- Several gold, copper-gold discoveries in 2024/2025, including Lawyers-Ranch, JD, Aurora, and **Williams**

Attractive Region

- Strategic investment from mid-tier and major mining companies

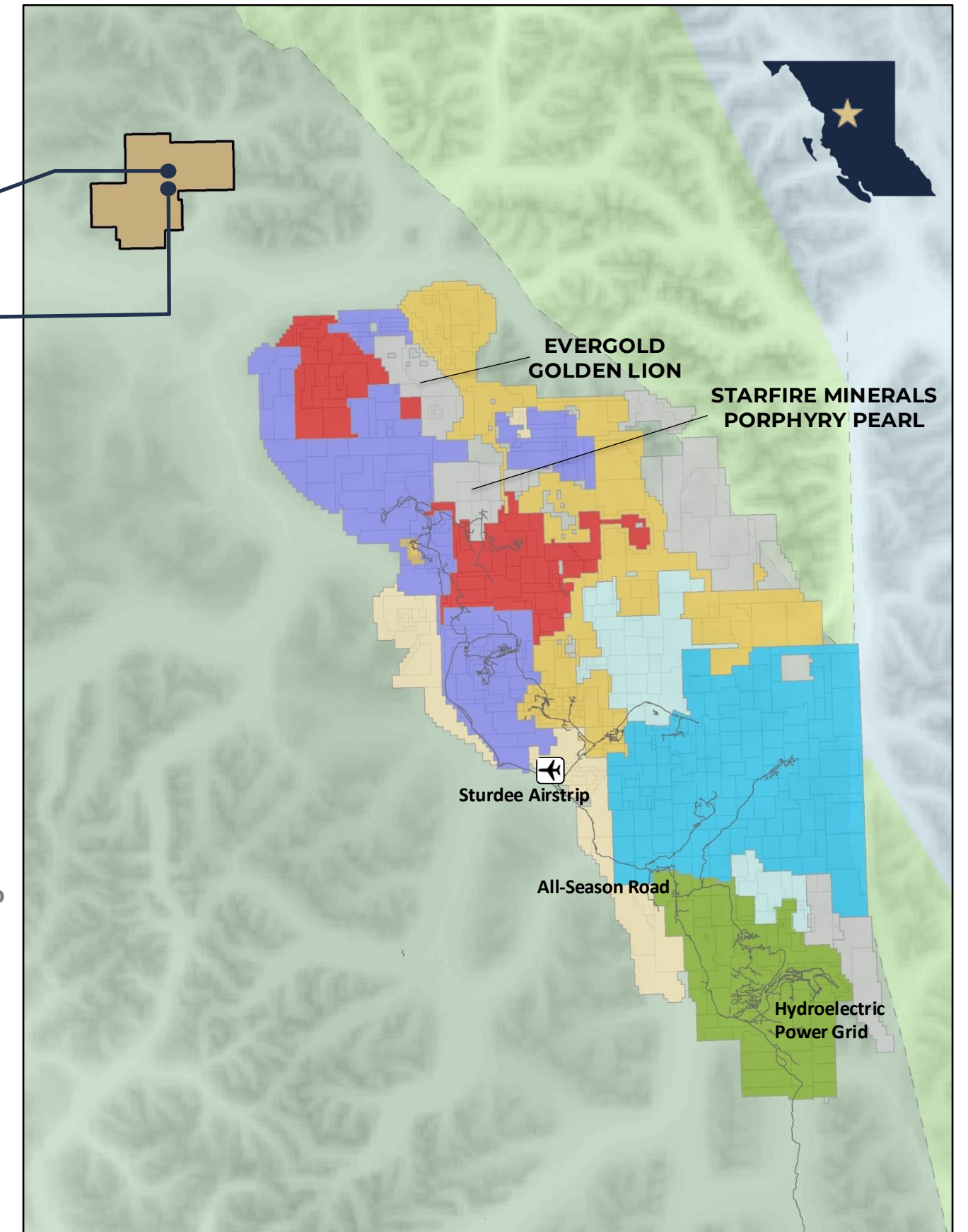
Potential

- Abundant mineral endowment and exploration upside
... including **Williams Property**

Williams Property

GIC

T-Bill



Williams Property



Snapshot:

2024 Bulk Tonnage Gold Discovery with high grade zones

Exploration Permits In Place

2 Key Prospects

Under Explored

11,489 Ha

Three Key Targets



GIC

- 2024 drilling discovery
 - **1.69 g/t Au over 104m (incl. 6.22 g/t Au over 18.98m)**
 - **2.16 g/t Au over 96.9m (incl. 4.60 g/t Au over 10.50m)**
- High grade orogenic style gold mineralization
- Multi million-ounce potential
- 1.8 km gold target

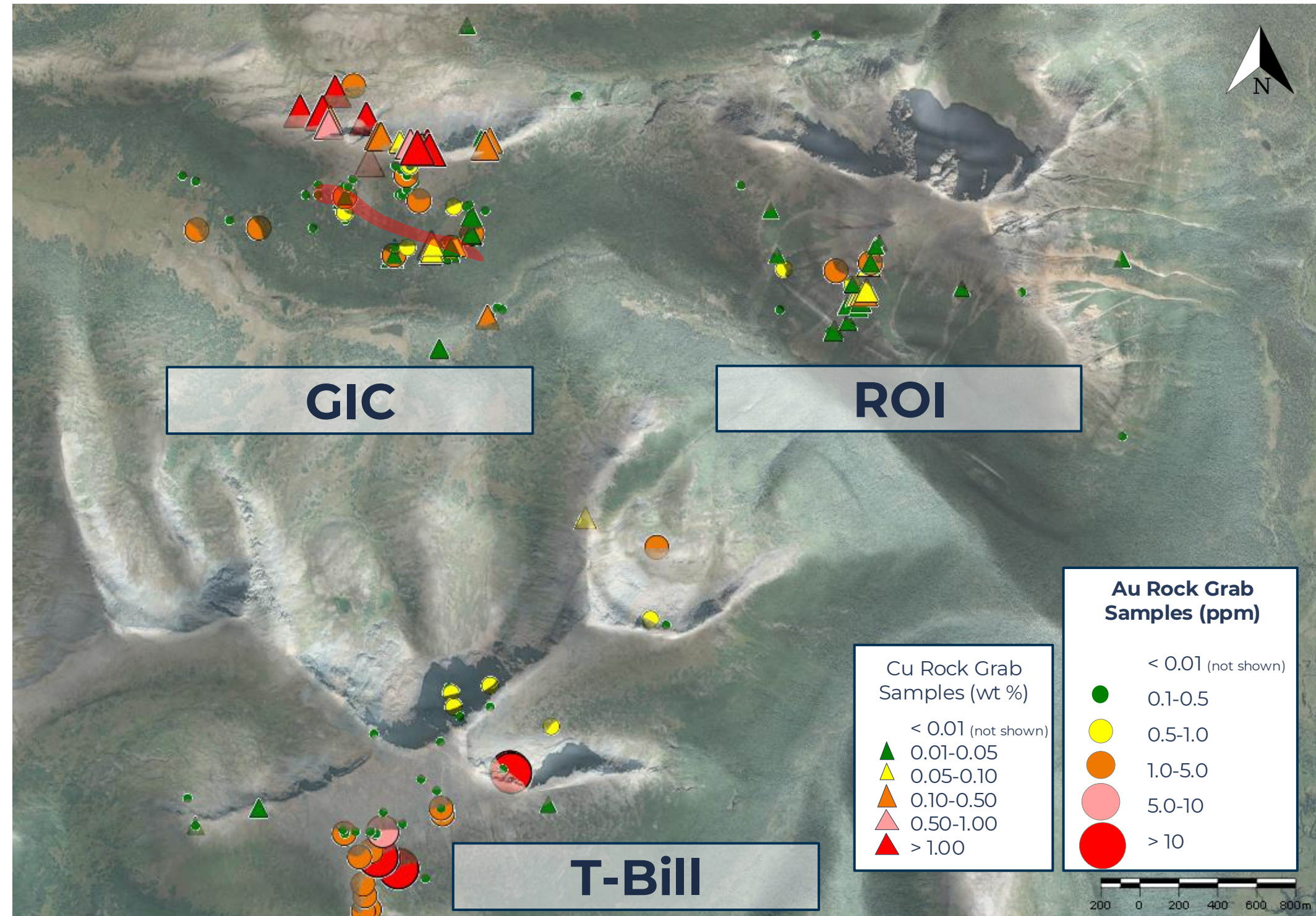
ROI

- 2.5 km east of GIC
- Intrusion related porphyry style anomalies
- 12 km Geophysical Au/Cu-Au signature

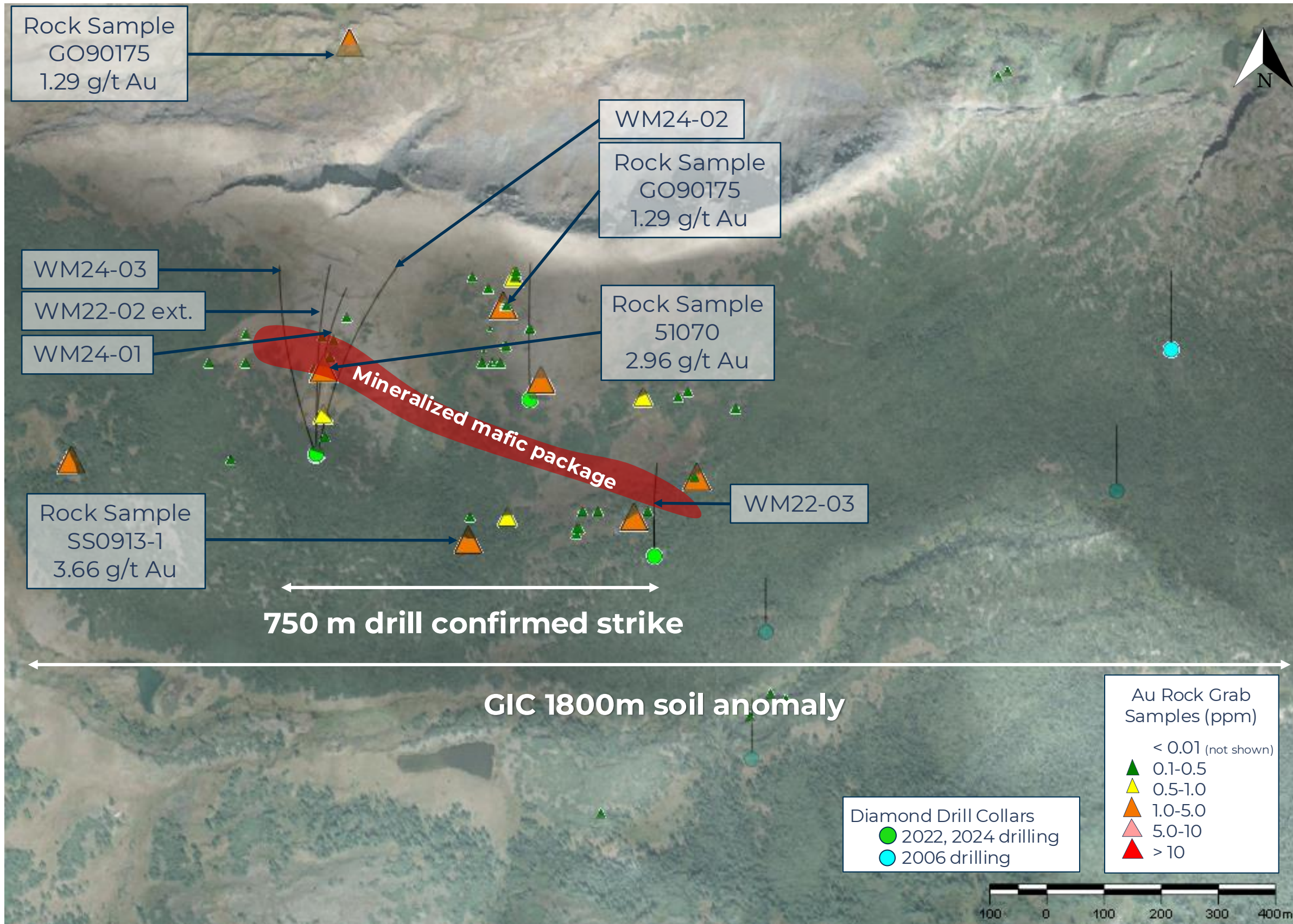
T-Bill

- 3 km x 2.5 km epithermal gold target
- Historic drilling: **1.38 g/t Au over 41.57 m (WM21-07)**
- **Historic surface sampling incl. 13-22 g/t Au**
- Only 300 m of target explored

Three Distinct mineralization styles across 21 sq km



GIC Orogenic Style High Grade Gold



WM24-01

- 1.69 g/t Au over 104.08 m
- Incl. 6.22 g/t Au over 18.98 m

WM24-02

- 1.33 g/t Au over 28.24 m
- 1.09 g/t Au over 57.98 m

WM22-02 (ext.)

- 2.16 g/t Au over 96.92m

WM24-03

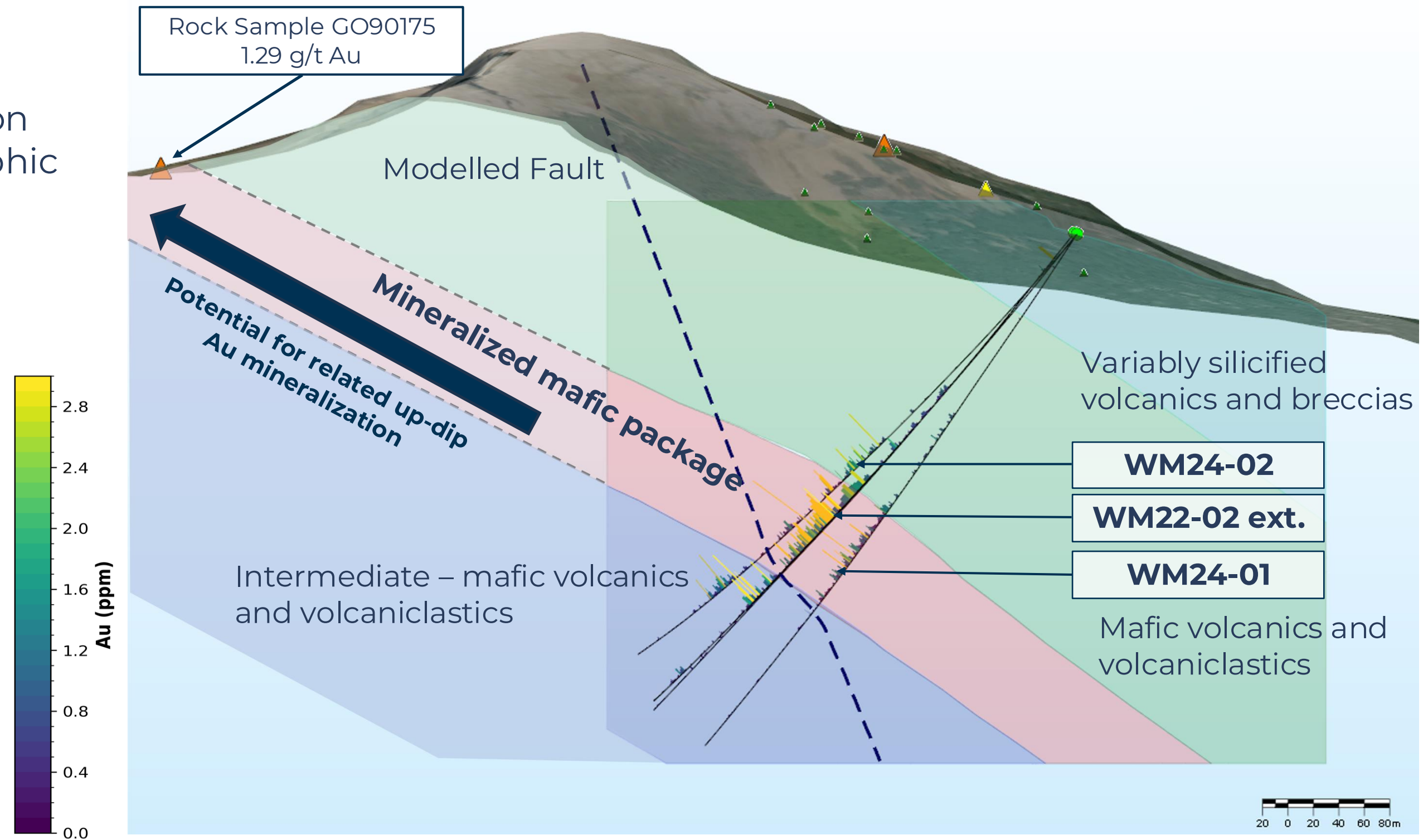
- 1.48 g/t Au over 37 m
- incl. 2.99 g/t Au over 11.25 m

- Bulk-tonnage mineralization
- Localized high grade
- Three distinct zones
- Open in all directions

GIC Orogenic Style High Grade Gold



- Main body of gold mineralization occurs in a structural-stratigraphic package of mafic volcanics and volcanoclastics.
- 2022 and 2024 drilling revealed high grade Au mineralization within Takla volcanics
- Coincident Au soil (up to 1+ g/t) and potentially related IP chargeability anomalies.



Cross section view of 2024 drilling within preliminary stratigraphy and structural model at GIC. Looking East

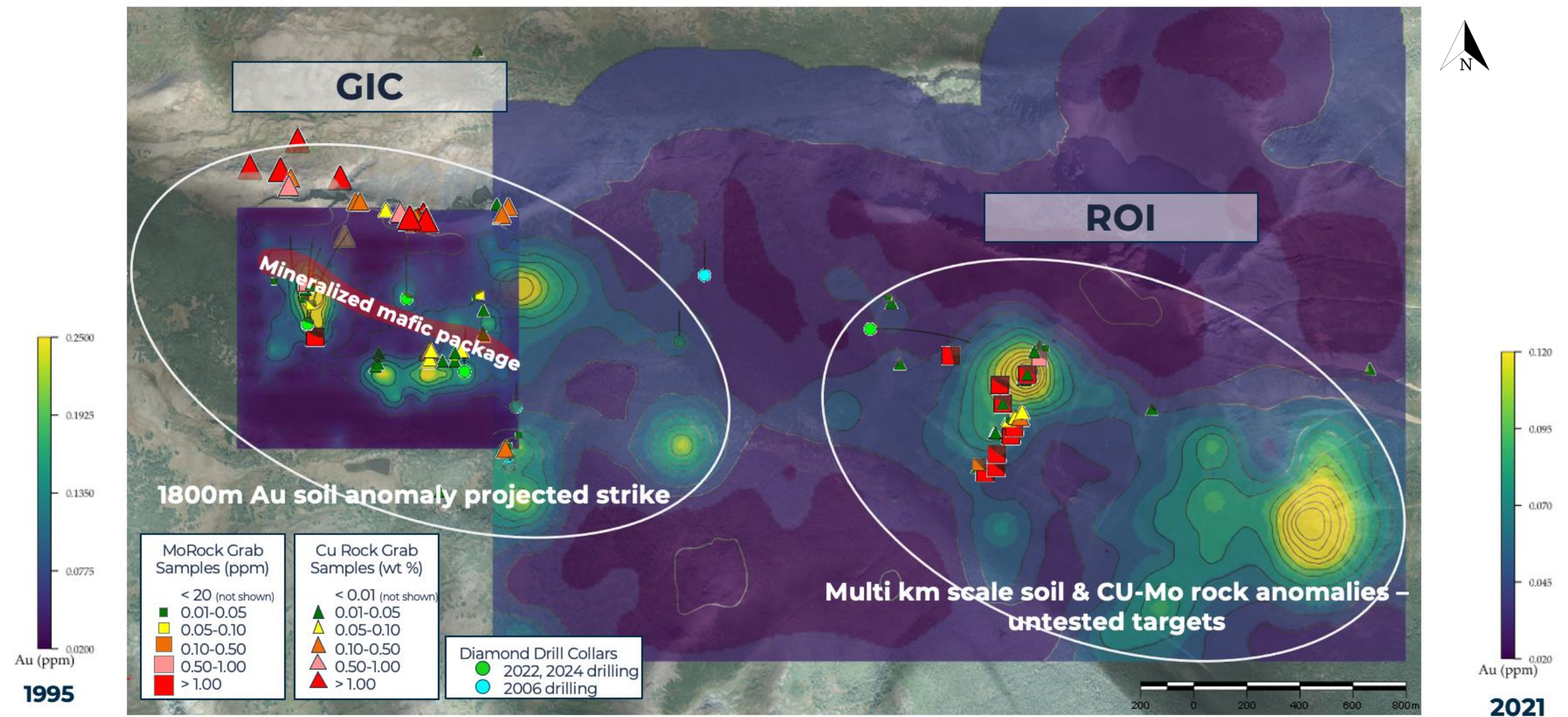
Two Adjacent Mineralization Styles

GIC Multimillion ounce gold target

- Bulk tonnage gold with high grade zones
- Orogenic style mineralization
- 750 m drill verified strike
- 1800 m gold anomaly
- Open in all directions
- Potentially related IP chargeability anomalies

ROI

- ~2 km east of GIC
- 2.8 km target marked by porphyry style geophysical anomalies
- Compelling Cu, soil and rock sampling



2026 Strategy



Advance GIC Gold discovery:

5,000 m staged drill program

Focus on 750 m drill confirmed strike length

Near surface targets

Preliminary exploration at ROI porphyry anomaly

Why Invest



Omega Pacific

Team

Technical team with notable resource discovery and development successes.

Expertise

Deep understanding of Toodoggone geology and resource development, including the launch and development of Lawyers – Ranch Project.

Location

Toodoggone District has exceptional mineral endowment, surging with exploration and development.

Gold Discovery

Bulk tonnage Au discovery, high grade zones, **multimillion ounce potential** & additional discovery targets.

Structure

49.5M shares outstanding with high management ownership.



Omega Pacific

CSE: **OMGA** | OTCQB: **OMGPF** | FSE: **QOF**

Jason Leikam CEO | T:778.858.8085 | jason@omegapacific.ca